

AREA STATEMENT		
Name	Area	Level

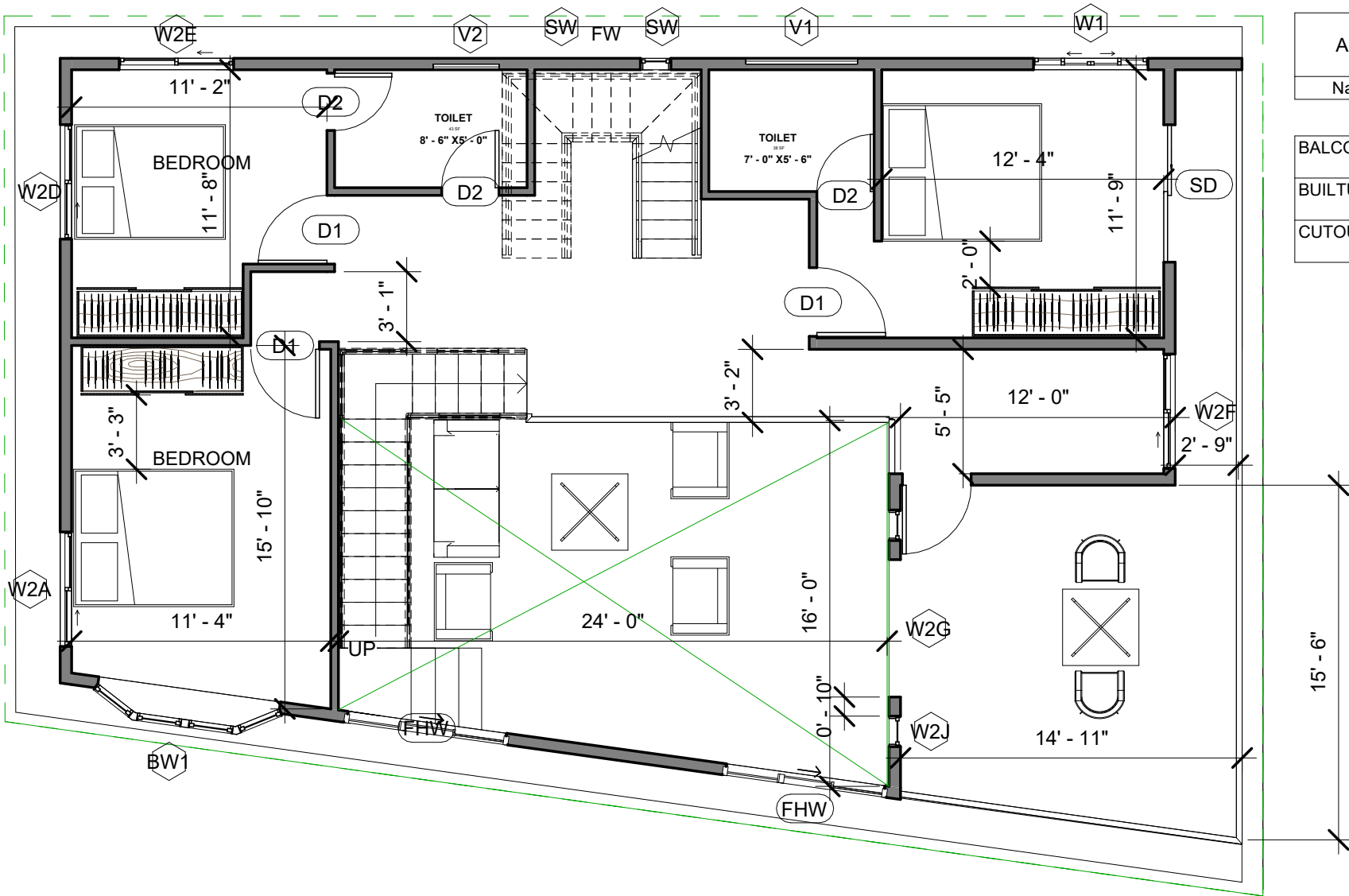
PARKING	162 SF	GF
BUILT UP AREA	1187 SF	GF
TOILET LOFT	69 SF	GF

EXTERIOR...		
Name	Area	Level

PARKING LOFT	181 SF	GF
--------------	--------	----

1 GF  
1 : 80

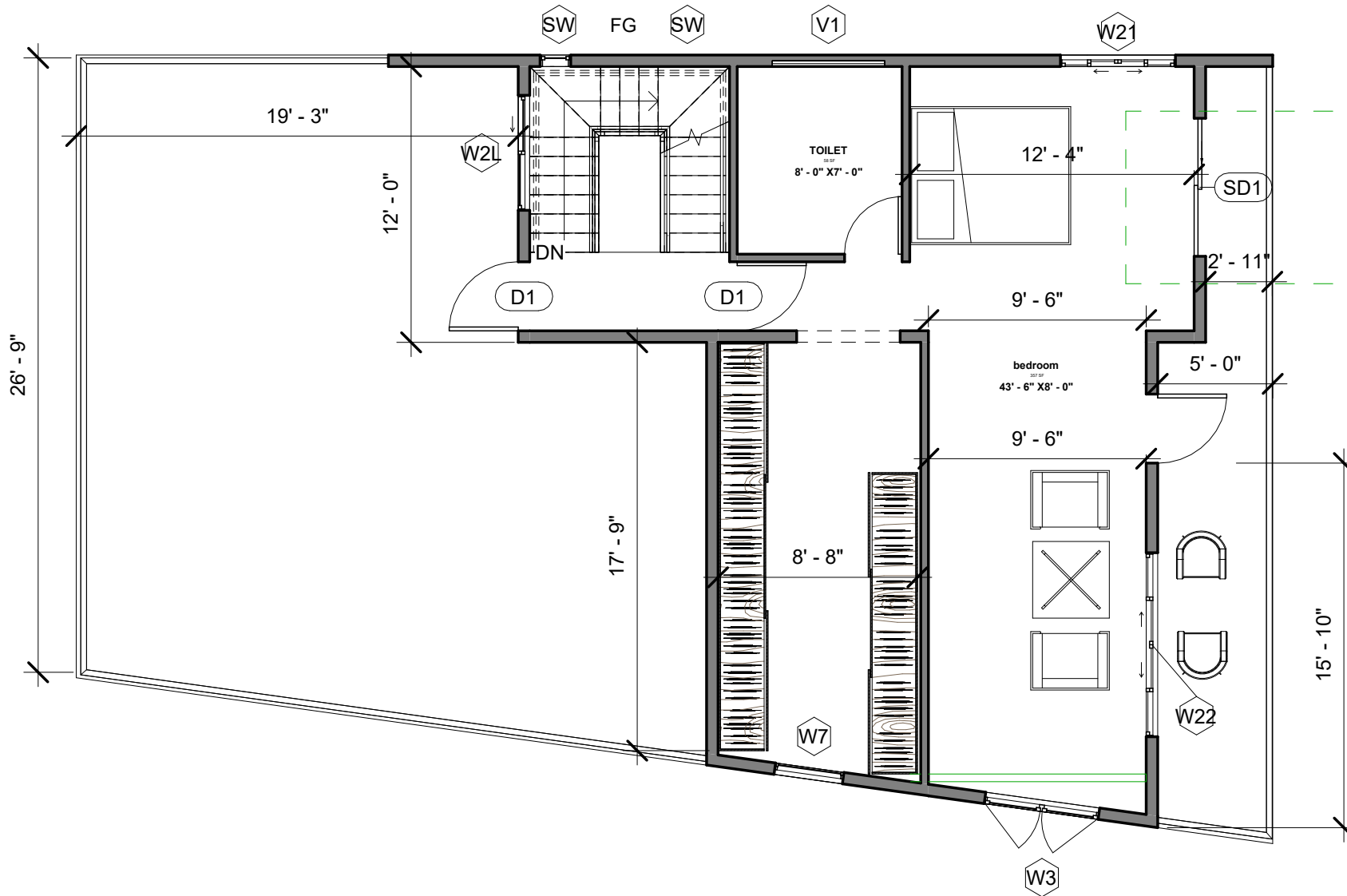
	<p>MRS. USHA SINGH</p>	<p>GROUND FLOOR</p>	
		<p>CRN NO. 143345</p>	<p>A101</p>
		<p>Date 23 AUG 2022</p>	
		<p>Drawn by Ar. Kaustubh</p>	
			<p>Scale</p>



AREA STATEMENT		
Name	Area	Level
BALCONY FF	280 SF	FF
BUILTUP FF	940 SF	FF
CUTOUT	375 SF	FF

① FF  
1 : 80

	<b>MRS. USHA SINGH</b>	<b>FIRST FLOOR</b>		
		CRN NO.	143345	<b>A102</b>
		Date	23 AUG 2022	
		Drawn by	Ar Kaustubh	
			Scale	



AREA STATEMENT		
Name	Area	Level

OPEN TERRACE	680 SF	SF
BALCONY SF	149 SF	SF
BUILT UP SF	767 SF	SF

① SF  
1 : 80

**Brick & Bolt**

MRS. USHA  
SINGH

SECOND FLOOR

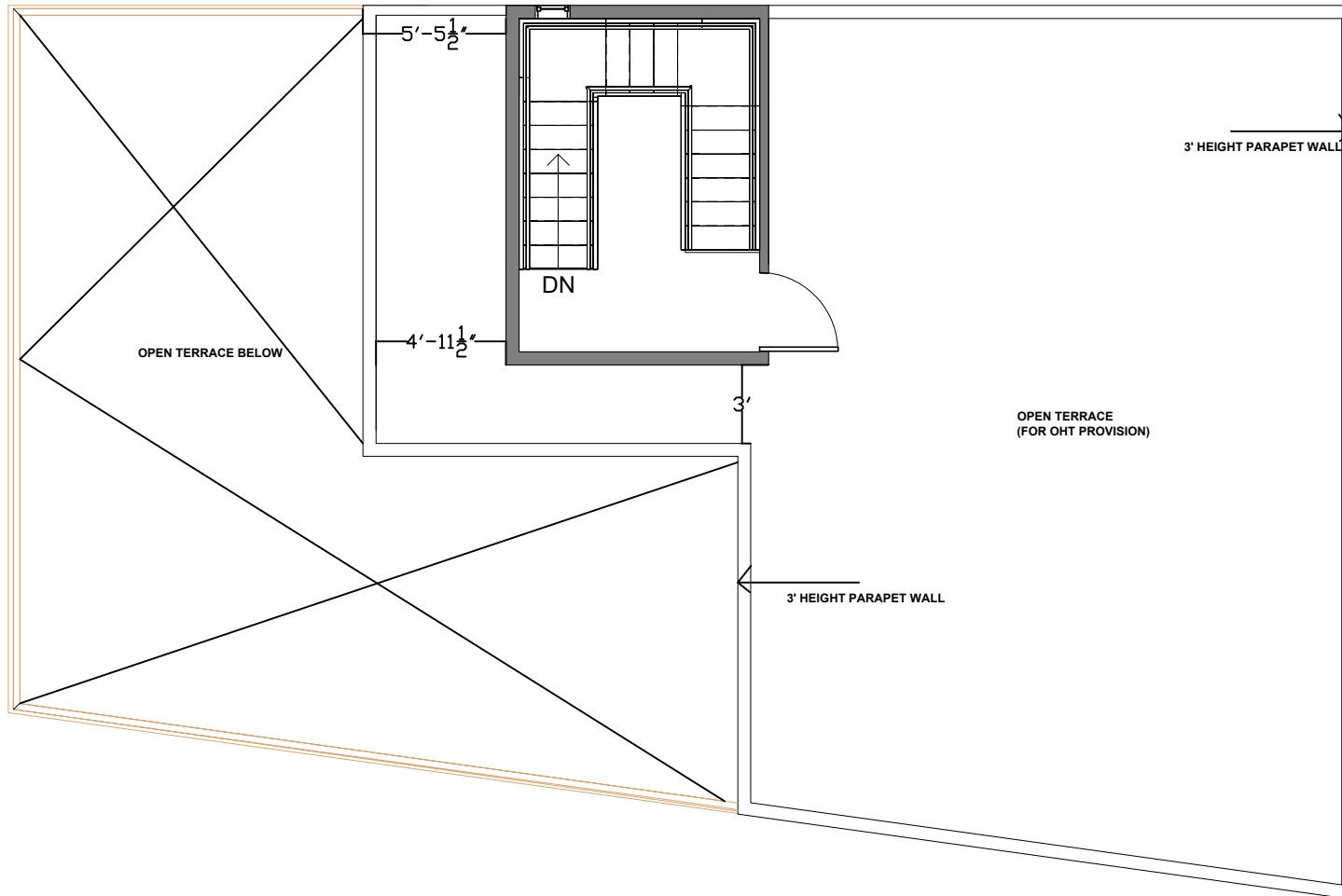
CRN NO. 143345

Date 23 AUG 2022

Drawn by Ar Kaustubh

A103

Scale



**AREA STATEMENT**  
**HEAD ROOM - 138 SQ FT**  
**OPEN TERRACE - 872 SQ FT**

① TF  
 1 : 80

**Brick & Bolt**

MRS  
 USHA SINGH

TERRACE FLOOR

CRN NO.	143345
Date	23AUG2022
Drawn by	Ar Kaustubh

**A103**

Scale

Window Schedule						
Type Mark	Height	Width	Level	Family	Keynote	Head Height
KW1	4' - 0"	6' - 0"	GF	Window-Sliding-Four	kitchen window	8' - 0"
SLIT FIXED	2' - 0"	7' - 0"	GF	Instance-Window-Fixed	fixed glass window above lintel(kitchen)	10' - 3"
SLIT FIXED	2' - 0"	7' - 0"	GF	Instance-Window-Fixed		10' - 3"
V2	2' - 0"	3' - 0"	GF	Window-Louvers	ventilator	8' - 0"
V2	2' - 0"	3' - 0"	GF	Window-Louvers	ventilator	8' - 0"
W1A	6' - 0"	6' - 0"	GF	Window-Sliding-Four	sliding window-dining	8' - 0"
W2	6' - 0"	5' - 0"	GF	Window-Sliding-Four	sliding window-bedroom	8' - 0"
W2C	8' - 0"	6' - 0"	GF	Window-Sliding-Four		10' - 0"

FULL HT. WINDOW	10'	7'	GF
FULL HT. WINDOW	10'	7'	GF
FULL HT. WINDOW	7'6"	7'	FF
FULL HT. WINDOW	7'6"	7'	FF
SLIDING SD	6'0"	8'	LEVEL FF
SLIDING SD 1	6'0"	8'	LEVEL SF

Window Schedule						
Type Mark	Height	Width	Level	Family	Keynote	Head Height
W4	3' - 0"	2' - 0"	GF	Window-Awning-Single	single shutter-kitchen	8' - 0"
W8	6' - 0"	8' - 0"	GF	Window-Sliding-Four	sliding window-living	8' - 0"
CL1	2' - 0"	8' - 0"	GF	Instance-Window-Fixed	fixed glass window above lintel-living	10' - 3"
BW1	5' - 0"	8' - 0"	FF	Window-Bay-Casement-30_Degree_Angle	bay window	7' - 0"
V1	2' - 0"	5' - 0"	FF	Window-Louvers	ventilator	7' - 0"
V2	2' - 0"	3' - 0"	FF	Window-Louvers	ventilator	7' - 0"
SW	5' - 0"	1' - 4"	FF	Instance-Window-Fixed	openable-stairs	7' - 8"
SW	5' - 0"	1' - 4"	SF	Instance-Window-Fixed	openable-stairs	5' - 2"

**Brick & Bolt**

MRS.  
USHA SINGH

**JOINERY SCHEDULE**

CRN NO. 143345  
Date 11-08-2022  
Drawn by Kaustubh

**A105**

Scale

Window Schedule						
Type Mark	Height	Width	Level	Family	Keynote	Head Height
FG	5' - 0"	1' - 4"	SF	Instance-Window-Fixed	fixed-stairs	1' - 6"
W2	6' - 0"	5' - 0"	FF	Window-Sliding-Four	sliding window-bedroom	7' - 0"
W2A	4' - 0"	5' - 0"	FF	Window-Sliding-Double	sliding window-bedroom	7' - 0"
W2D	4' - 0"	5' - 0"	FF	Window-Sliding-Double	sliding window-bedroom	7' - 0"
W2E	5' - 0"	5' - 0"	FF	Window-Sliding-Double		7' - 0"
W2F	6' - 0"	5' - 0"	FF	Window-Sliding-Double	family	8' - 0"
W2G	7' - 0"	6' - 0"	FF	Fixed	double ht.	8' - 0"
W2K	7' - 0"	1' - 4"	FF	Instance-Window-openable	double ht.	8' - 0"
V1	2' - 0"	5' - 0"	SF	Window-Louvers	ventilator	7' - 0"

Window Schedule						
Type Mark	Height	Width	Level	Family	Keynote	Head Height
W2J	7' - 0"	1' - 4"	FF	Instance-Window-openable	double ht.	8' - 0"
W2	6' - 0"	5' - 0"	SF	Window-Sliding-Four	sliding window-bedroom	7' - 0"
W3	6' - 0"	5' - 0"	SF	Window-Casement-Double	SLIDING-bedroom	7' - 0"
W7	6' - 0"	3' - 0"	SF	Window	SLIDING-walk in wardrobe	7' - 0"
W8	7' - 0"	8' - 0"	SF	Window-Sliding-Four	bedroom	8' - 0"
W2L	4' - 0"	5' - 0"	SF	Window-Sliding-Double	staircase	7' - 0"
SW	5' - 0"	1' - 4"	SF	Instance-Window	openable-stairs	9' - 0"
FG	5' - 0"	1' - 4"	TF	Instance-Window-Fixed	fixed-stairs	1' - 6"
SW	5' - 0"	1' - 4"	TF	Instance-Window	openable-stairs	6' - 2"

**Brick & Bolt**

MRS.  
USHA SINGH

**JOINERY SCHEDULE**

CRN NO. 143345

Date 11-08-2022

Drawn by Kaustubh

**A106**

Scale